

**Gizzard Defatter
B-GD-2-41**



INDEX

FOREWORD	3
Section I: SAFETY PRECAUTIONS	4
Section II: TECHNICAL SPECIFICATIONS	7
Section III: FAMILIARIZATION	8
Section IV: INSTALLATION & ADJUSTMENT	9
Section V: PREVENTATIVE MAINTENANCE	10
NOTES	11
Section VI: BPE-8987, GIZZARD DEFATTER PARTS	12
Section VII: BPE-8987 PARTS LISTS	13
Section VIII: SPARE PARTS LISTS	14
Section IX: BPE-8990 FINGER REEL ASSEMBLY	15
Section X: BPE-8990 PARTS LIST	16
Section XI: BERRY DISCLAIMER	17
Section XII: BERRY LETTER OF CONFORMITY	18

Model Number and Serial Number located on Back Cover

FOREWORD

Thank you for purchasing Berry's **Gizzard Defatter**. Berry Plumbing & Equipment has made every effort to cover all aspects of maintenance, adjustments and operational procedures required in order to receive the optimum yield and performance from the **Model B-GD-2-41 Gizzard Defatter**. Before beginning any procedure on or with this equipment, please read carefully this entire manual to avoid any injury or damage to personnel and/or machine components.

The purpose of this manual, aside from operation, maintenance and repair, is to promote safety through the use of correct practices and procedures. **READ, UNDERSTAND AND FOLLOW** the safety and operating instructions contained in this manual before operating machine.

The specifications as stated herein are the most current at the time of publication. However, consistent with our standard of continual product improvement, we reserve the right to change the design without notice or obligation to modify any equipment previously sold or delivered.

Within the following text and illustrations, certain "NOTES", "CAUTIONS" and "WARNINGS" may be found. Pay close attention to these when performing any particular procedure.

"NOTE" - Instructions or reminders that can help in making a given procedure or task easier and/or faster as well as safer.

"CAUTION" - Refers to situations to avoid in order to prevent possible injury or component/machine damage.

"WARNING" - Pay very close attention to all warnings, as these are vital instructions for certain procedures to avoid serious personal injury and/or death to the operator or bystanders.

NOTE!

If this machine is properly installed in accordance with local, state and federal regulations, used in concert with the manufacturers design intent, operated in a safe and responsible manner and, also, cleaned and sanitized before each usage - according to instruction and SOP (Standard Operating Procedure) - it meets the criteria for delivery of an unadulterated product.

In addition to the above, always make certain that this machine is kept certifiably inspected for cleanliness and sanitation before each usage, in order to prevent the delivery of micro biologically - contaminated product.

Section I: SAFETY PRECAUTIONS

Berry Plumbing & Equipment designs its equipment for maximum personal safety. However, as with any operation of machinery, certain safety precautions should be observed. Your machine may have cutting edges or moving parts, which may be dangerous and can cause serious injuries. The following list of safety precautions have been developed to help production, clean – up and maintenance personnel work with this machine safely. Production or clean – up personnel should NEVER perform any maintenance on a machine. Instead, they should call qualified maintenance personnel when they have a problem with a machine.

- **READ, UNDERSTAND, AND PRACTICE** the safety precautions found in this manual.
- **KNOW** the limitations and hazards associated with this machine.
- **HAND SAFETY: KEEP HANDS OUTSIDE THE MACHINE WHILE IN OPERATION.**
- **NEVER REACH INTO THE MACHINE WHILE IT IS IN OPERATION.**
- **DO NOT PUT HANDS INTO INFEED AREAS AT ANY TIME DURING OPERATION.**
- **EYE SAFETY:** Wear an approved safety shield, goggles, or glasses to protect the eyes when cleaning or performing maintenance on this machine.
- **DO NOT** stand on, climb on, or lean over the machine while in operation.
- **“LOCK OUT – TAG OUT”:** When performing maintenance on a particular machine, **MAKE SURE** its local control switch is **“OFF”**, the operational/electrical controls in the central control room have been turned **“OFF”** and **“LOCKED OUT”** and a **“DO NOT OPERATE”** tag is place on the machine.
- **PERSONAL PROTECTION:** Before performing any maintenance on the machine, remove tie, rings, watch, and any other jewelry and roll sleeves above the elbows. Remove any loose clothing and confine long hair. Protective type footwear should be worn. Because of the operational and sanitary requirements, the machine has several **AREAS WHERE INJURIES COULD OCCUR** to someone getting to close or trying to make adjustments or repairs while the machine is in operation. **MAKE SURE THAT ALL PERSONS WORKING WITH OR NEAR THE MACHINE UNDERSTAND THE POTENTIAL DANGER.**
- **KEEP** all access covers in place when power is applied. **NEVER** attempt operational adjustments, cleaning, or removal of blockages while machine is in operation.
- **CARELESS ACTS:** Give the work you are doing your undivided attention. Looking around, carrying on a conversation and “horseplay” are careless acts that can result in serious injury.

Section I: SAFETY PRECAUTIONS

- **ELECTRICAL CONNECTIONS:** Have all wiring done by a licensed electrician, in accordance with national and local electrical codes. Provide one or more emergency cut – off switches, on or near the machine, in places which are easily accessible in the event of an accident.
- **MISUSE:** Do not use the machine for other than its intended use. If used for other purposes, Berry Plumbing & Equipment **DISCLAIMS ANY WARRANTY**, which might otherwise have been applied in accordance with Berry Plumbing & Equipment’s standard limited warranty, and **HOLDS ITSELF BLAMELESS FOR ANY INJURY WHICH MIGHT BE A RESULT FROM THAT USE.**
- **REPLACEMENT PARTS:** Use only Berry Plumbing & Equipment or factory authorized replacement parts and accessories; otherwise, the machine warranty will be null and void.
- **REFER** all operation, maintenance, or service to qualified personnel.

DISCLAIMER

Berry Plumbing & Equipment shall bear no liability for any injury or damage resulting from repairs, modifications, or adjustments attempted outside the scope of this manual, our factory or written authorization; including installation by other than Berry Plumbing & Equipment personnel.

Section I: SAFETY PRECAUTIONS

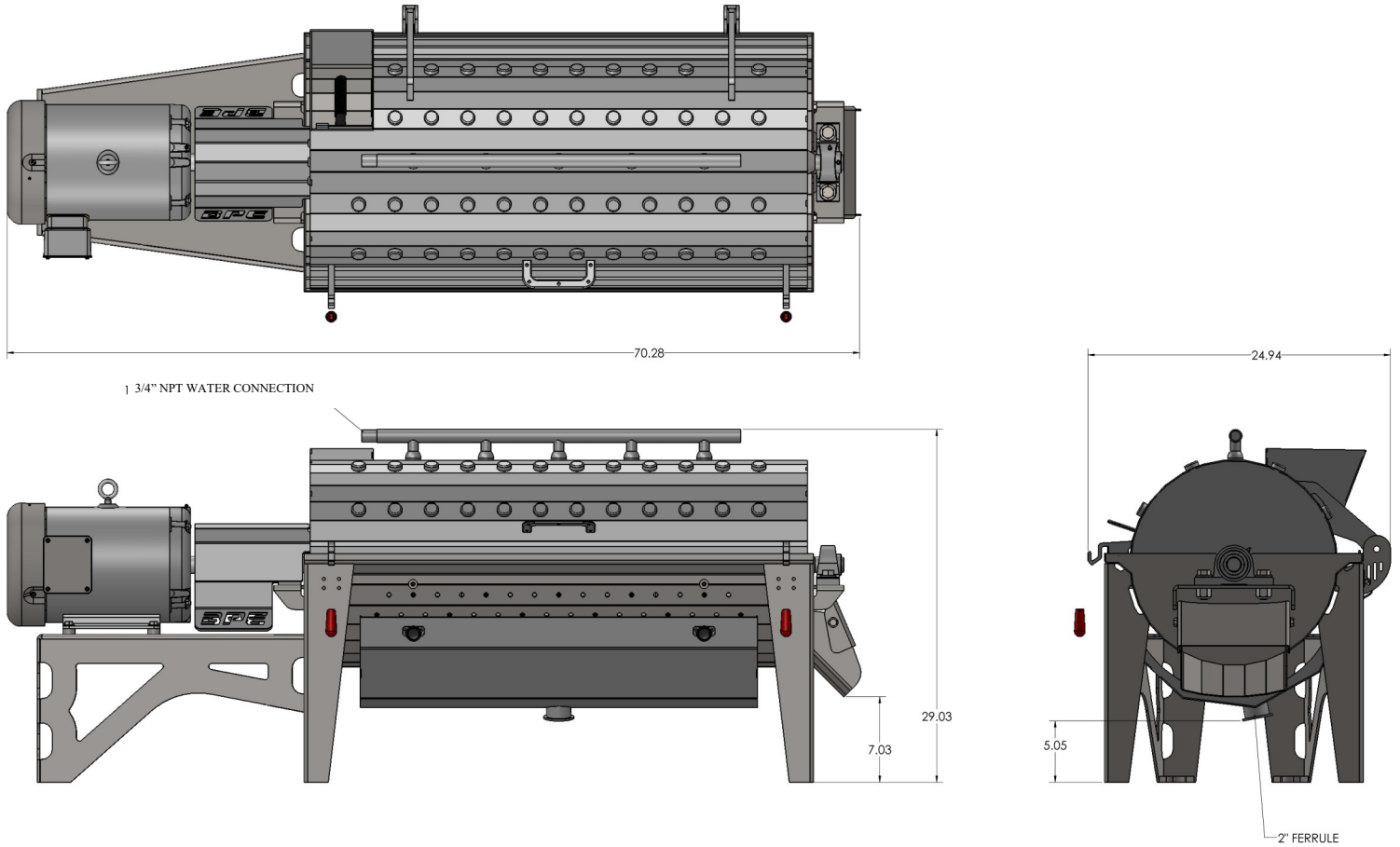
NOTE

The decals illustrated below are typical of the DANGER, WARNING and CAUTION decals found on this machine. READ, UNDERSTAND & FOLLOW all instructions and/or messages found on the decals before operating or servicing machine.



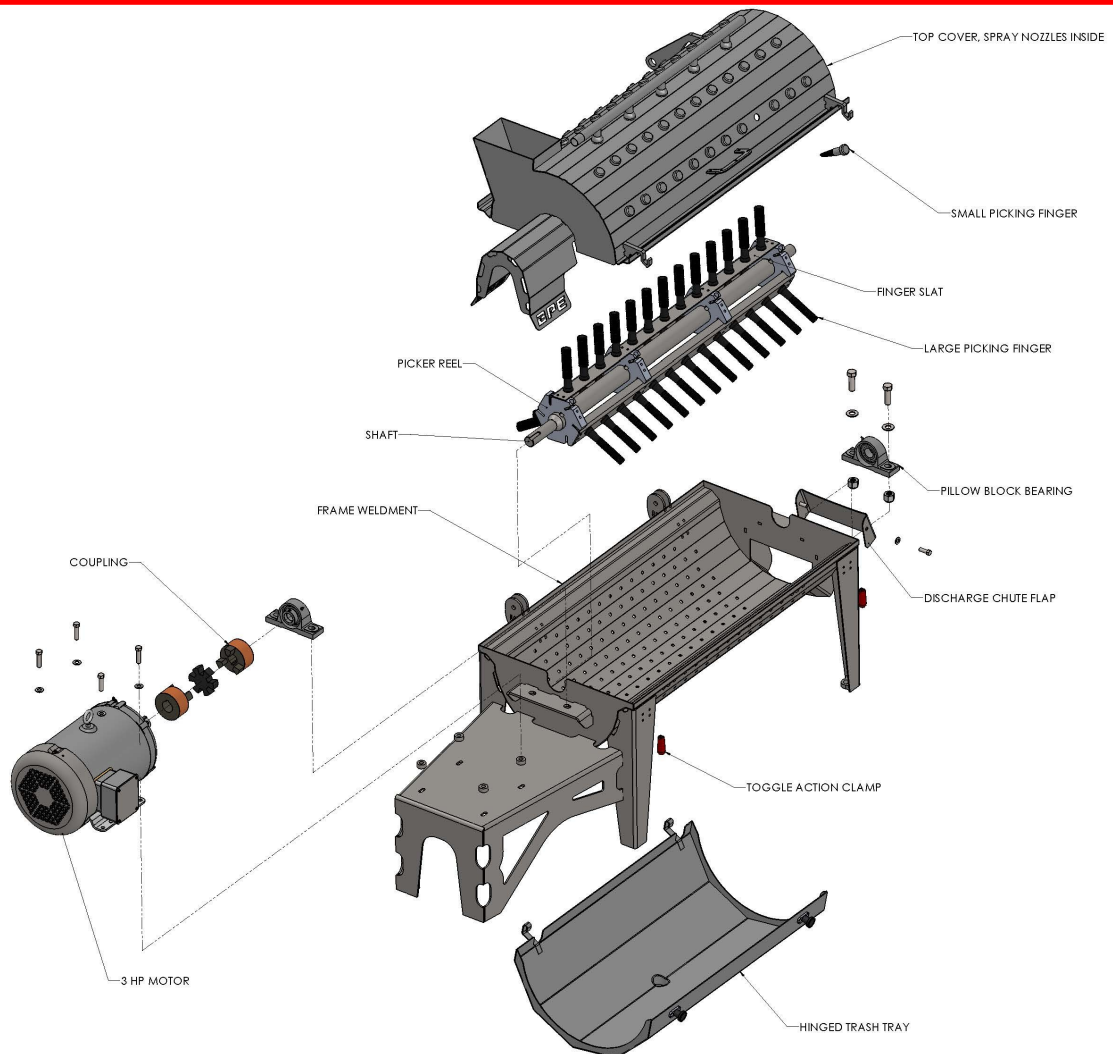
 WARNING	 ATENCIÓN	 ATTENTION
<ul style="list-style-type: none"> ▶ KEEP ALL GUARDS AND COVERS IN PLACE. ▶ KEEP HANDS AND FEET AWAY FROM ALL MOVING PARTS. ▶ LOCK OUT AND TAG OUT BEFORE MAKING ANY ADJUSTMENTS. 	<ul style="list-style-type: none"> ▶ MANTENGA LAS CHAPAS DE PROTECCIÓN EN POSICIÓN. ▶ MANTENGA LAS MANOS Y LOS PIES RETIRADO DE LA MAQUINARIA. ▶ ASEGURE EL BOTÓN ON/OFF, O EXPLICA PORQUE NO FUNCIONA LA MÁQUINA. 	<ul style="list-style-type: none"> ▶ GARDEZ TOUS LES COUVERTURES DE PROTECTION À LA PROPRE PLACE. ▶ GARDEZ LES MAINS ET LES PIEDS DE TOUR LE PARTS MOUVANTS. ▶ FERMEZ À CLEF LE COMMUTEUR QU EXPLIQUEZ SUR LA FICHE POURQUO L'APPAREIL S'EST COUPÉ.

Section II: TECHNICAL SPECIFICATIONS



WATER:	3/4\" CONNECTION @ 60 PSI
ELECTRICITY:	Motor, 3 HP, 860 RPM, 60 Hz
CAPACITY:	500 GIZZARDS PER HOUR
HEIGHT:	APPROXIMATELY 30\"
WIDTH:	APPROXIMATELY 25\"
LENGTH:	APPROXIMATELY 71\"

Section III: FAMILIARIZATION



3.1 INTRODUCTION

The Berry Plumbing & Equipment patented **Gizzard Defatter, B-GD-2-41**, is constructed entirely of stainless steel and rubber for durability and easy cleanup. Gizzards from your Berry **Gizzard Defatter** are transported to the in feed chute on the Berry **Gizzard Defatter** where they feed into the Defatter chamber. Inside the Defatter chamber rotating picking fingers massage the gizzards against stationary picking fingers removing the fat and unwanted product, thus causing the fat and unwanted product to pass through the perforated tray to drain from the bottom of the machine. The gizzard, then clean of the fat and unwanted product is pushed by the rotating fingers

steadily downward to the discharge chute . Here the gizzards emerge clean and free of the fat and unwanted product.

3.2 NOMENCLATURE

The nomenclature drawing shown above (Figure 3.1) points out the major components of the Berry Plumbing & Equipment **Gizzard Defatter**. Berry Plumbing & Equipment Company recommends that all operators and maintenance personnel become familiar with the construction and operation of this machine before it is put on line.

Section IV: INSTALLATION & ADJUSTMENT

IMPORTANT: Make sure power is turned off while making any electrical connections. Always turn power off, implement “lock out / tag out” procedures to ensure safety during any cleaning, maintenance, adjustments, etc.

- | | |
|--|--|
| <p>4.1 Determine correct location for installation of Berry Gizzard Defatter allowing room for access to all sides of the machine for cleaning and maintenance.</p> <p>4.2 Move the Berry Gizzard Defatter into the desired position with a lifting device with sufficient capabilities.</p> | <p>4.3 Adjust machine height and slope per customer specifications by loosening the set screws installed in the legs and moving the leg extensions to the desired position. Retighten all set screws.</p> <p>4.4 Adjust water temperature.</p> |
|--|--|

Section V: PREVENTATIVE MAINTENANCE

5.1 CLEANING/WASHDOWN

- A. The machine should be cleaned thoroughly at the end of each shift. Use only U.S.D.A. approved detergent and high-pressure, hot water.
- B. Rinse thoroughly.

5.2. DAILY

- A. Check all bearings for wear.
- B. Lubricate all grease fittings as required with an U.S.D.A. approved lubrication.
- C. Check for missing picking fingers.
- D. Check drive.

5.3 WEEKLY

- A. Replace picking fingers.
- B. Check Bearings.

5.4 MISCELLANEOUS

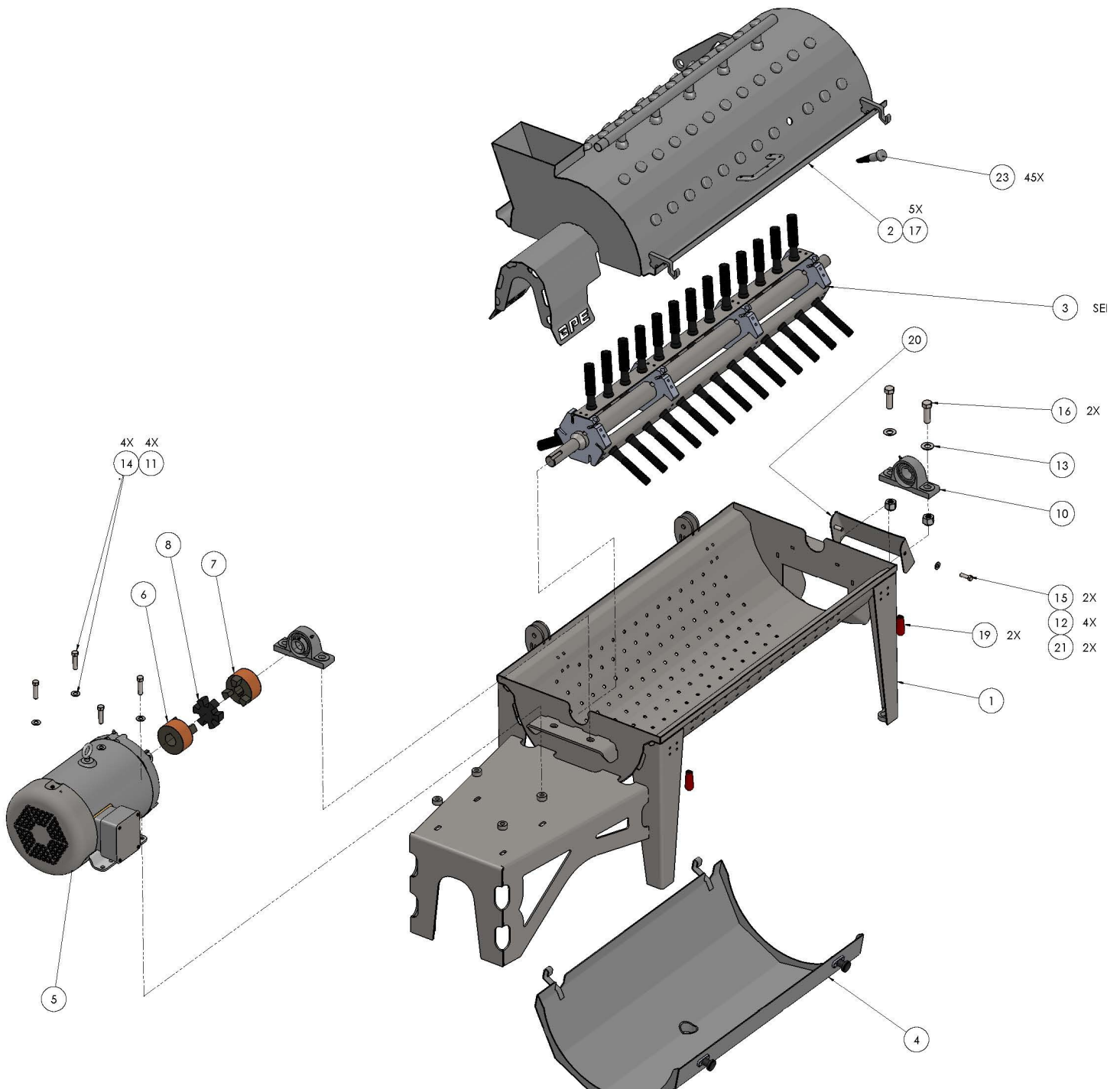
- A. Replace any instructional / caution labels as needed.

NOTES

Notes: You should utilize this page to make notes concerning any questions that arise about your machine over installation, operation, maintenance, cleaning or safety. Write down response given by manufacturer, retain for future reference.

***MOTOR ROTATION IS ALWAYS THE DIRECTION OF THE BEND ON SLATS.**

Section VI: BPE-8987, GIZZARD DEFATTER PARTS



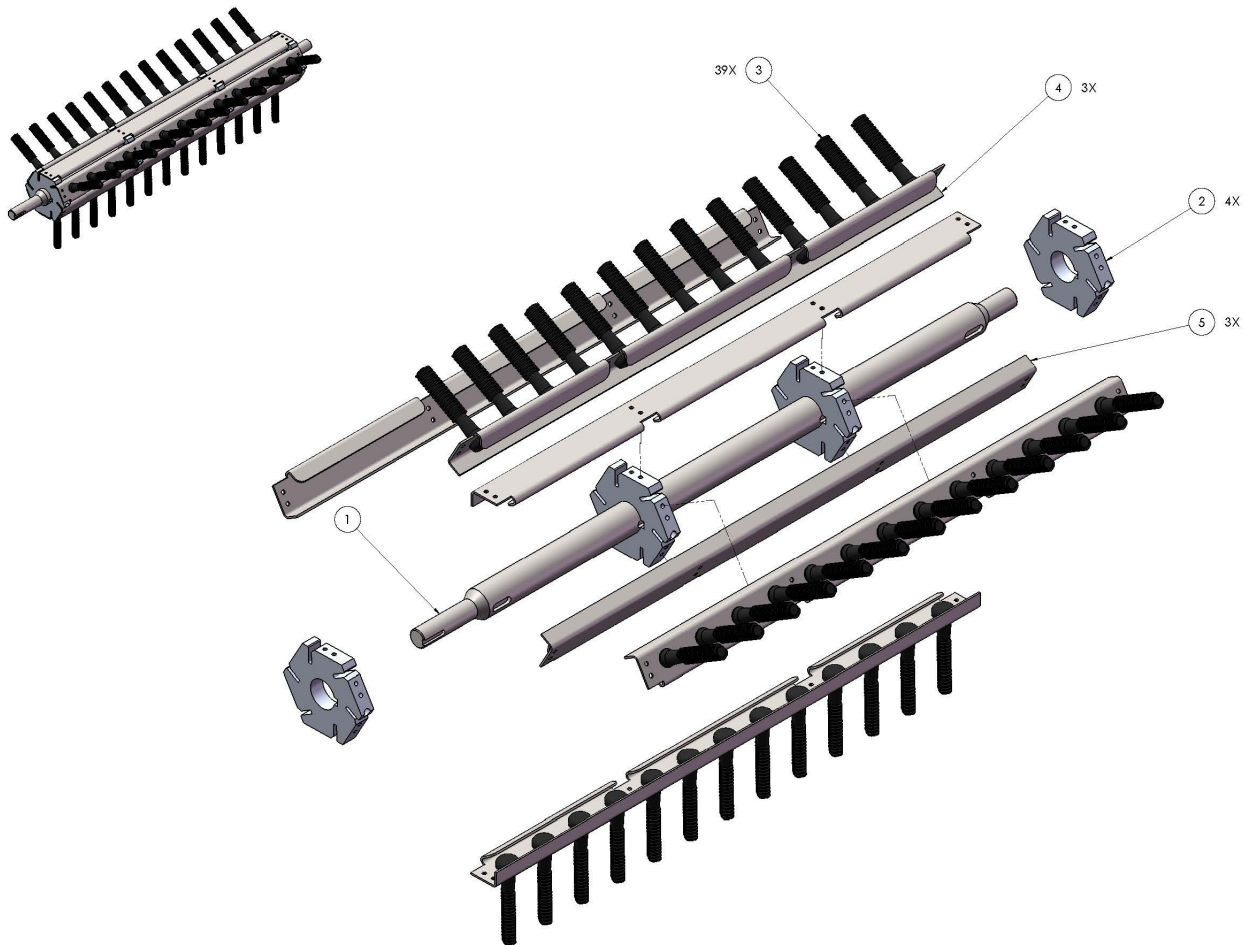
Section VII: BPE-8987, GIZZARD DEFATTER PARTS LIST

LOC	BPE PART #	DESCRIPTION	QTY.
1	BPE-8988	Frame Weldment	1
2	BPE-8989	Cover Weldment	1
3	BPE-8990	Finger Reel Assembly	1
4	BPE-8995	Hinged Trash Tray	1
5	BPE-7046	3 Hp Motor	1
6	BPE-3649	Coupling, 1 3/8" Bore	1
7	BPE-3651	Coupling, 1 1/4" Bore	1
8	PCU-L110 SOX	Coupling, Sox	1
9	BPE-8631_4375_1_5	Spacer	4
10	BPE-4025	Pillow Block Bearing, 1 1/4" Bore, ss	2
11	43NWCOS	Washer, Flat, 7/16, ss	4
12	37NWCOS	Washer, Flat, 3/8, ss	4
13	50NWCOS	Washer, Flat, 1/2, ss	2
14	1170160	Bolt, Hex Hd, 7/16-14 x 1.75 Lg, ss	4
15	172269	Bolt, Hex Hd, 3/8-16 x 1.125 Lg, ss	2
16	50C200HCSS	Bolt, Hex Hd, 1/2-13 x 2.0 Lg, ss	2
17	BPE-3181	Sprayer Nozzle	5
19	BPE-3604	Pull Action Clamp	2
20	BPE-8999	Discharge Chute Flap	1
21	37CNNES	Hex Lock Nut, 3/8-16, ss	2
22	62CNNES	Hex Lock Nut, 5/8-11, ss	2
23	BPE-3614	Small Picking Finger	45
Misc.	LABELS	DANGER / CAUTION / WARNING LABELS	

Section VIII: SPARE PARTS LIST

LOC	BPE PART #	DESCRIPTION	QTY.
5	BPE-7046	3 Hp Motor	1
6	BPE-3649	Coupling, 1 3/8" Bore	1
7	BPE-3651	Coupling, 1 1/4" Bore	1
8	PCU-L110 SOX	Coupling, Sox	1
10	BPE-4025	Pillow Block Bearing, 1 1/4" Bore	2
23	BPE-3614	Small Picking Finger	45

Section IX: BPE-8990, FINGER REEL ASSEMBLY



Section X: BPE-8990, FINGER REEL ASSEMBLY, PARTS LIST

LOC	BPE PART #	DESCRIPTION	QTY.
1	BPE-8991	Shaft	1
2	BPE-1092	Picker Back Rotator Plate	4
3	BPE-3074	Large Picking Fingers	39
4	BPE-8992	Finger Slat	3
5	BPE-9002	Finger Slat, Plain	3

***YOU SHOULD CONSIDER HAVING ALL OF THE PARTS AS SPARE PARTS FOR THE REEL ASSEMBLY**

Section XI: BERRY DISCLAIMER



6736 Cleveland Hwy., Clermont, Ga. 30527
Phone: 770-983-3929
Fax: 1-866-808-9957

This Berry Technical manual has been written for a specific Equipment model and/or System based upon Berry design and manufacture. Berry uses the highest quality OEM parts and components as part of the original fabrication and manufacture of Berry machinery and/or systems. These items are specifically chosen to incorporate into the manufacture of our products and *many are altered inhouse for the precise function of machine operation.* Due to these distinctive characteristics being incorporated into our machines, it is highly recommended that you purchase replacements from Berry. This will ensure the warranty of any individual parts, entire machines, or systems. Berry includes all OEM instructional booklets for these products in hard copies of technical manuals and these are also available in pdf format electronically. Berry assumes no responsibility for the information within this manual to be applicable or correct if original parts have been replaced with different components other than those recommended in our manuals. Berry assumes no responsibility for any type of negligent occurrence if the design, program, build, or manufacture has been altered, overwritten or modified in any way or in the event of use with inferior parts, alternate parts, or modifications not authorized in writing by Berry.

Due to current global supply chain issues, various OEM's of purchased parts are used as can be obtained. For that reason, manuals specific to your purchase apply only to your machine. Similar machines purchased for different plants within the same company may have different parts used, based on availability. We appreciate your understanding in this matter as it is beyond our control.

Section XII: BERRY LETTER OF CONFORMITY



6736 Cleveland Hwy., Clermont, Ga. 30527
Phone: 770-983-3929
Fax: 770-983-3911

Whom It May Concern:

This letter is to advise you that all equipment manufactured by Berry Plumbing & Equipment has been designed with USDA specifications considered in respect to Safety and Sanitation. All equipment is fabricated with safety measures such as guards, safety switches, emergency stop buttons, etc. to ensure the safety of all operators. In addition, the equipment is designed to meet requirements of HACCP and Sanitation SOP regulations, which the plant establishment follows to ensure that the product produced is unadulterated. Please refer to each machine's technical manual for proper use and instruction of the installation, operation, cleaning, and safety guidelines.

If you have any questions, please contact us at:

Phone: 770-983-3929
Fax: 866-808-9957
Email: tberry@berryequipment.net

Thank you.
Todd Berry
Business Operations Manager